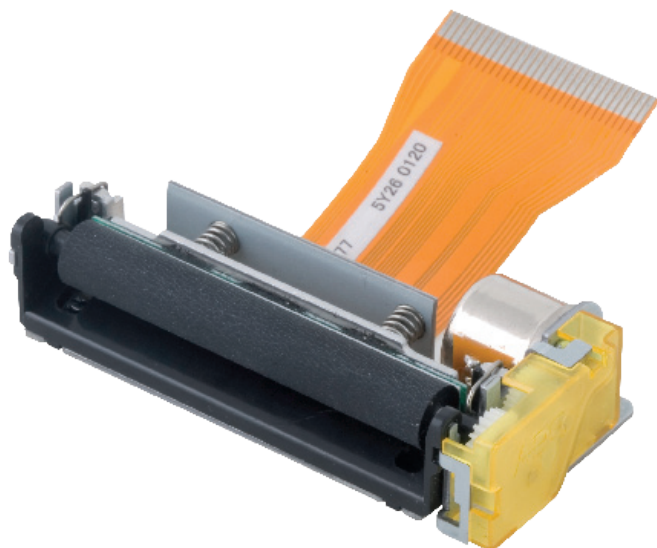


Paper



58 mm



Specifications

FM205-HS

Print method	Thermal
Number of dots	384
Resolution (dots/mm)	8
Printing width (mm)	48
Paper width (mm)	58
Max. paper thickness (μ)	80
Paper loading	Easy loading
Printing speed (mm/s)	120
Paper detection	Opto sensor
Temperature detection	Thermistor
Head-up or Cover-open detection	Opto sensor
Voltage range (Logic Head)	3.0-5.5 V 4.5-9.5 V
Dot resistance (Ohm)	176 ± 4%
Energy per dot (mJ)	0.25
Stepper motor (Ohm)	Bipolar (10)
Weight (g)	40
Life/reliability	100km/ 100M pulses
Operating temperature (°C)	-5 to 50 °C
Operating humidity (%)	20 to 85 non cond.
Dimensions (WxDxH mm)	69.3x32.7x15.3

Features

- Ultra compact design (width 69.3 mm, depth 32.7 mm and height only 15.3 mm)
- Ultra light (40 g)
- Low consumption
- Printing speed 120 mm/s
- Full electrostatic protection
- Patented Easy loading and Easy Door Opening System
- Double opto available
- Easy loading cutter available

Applications

- Automotive
- Calculators
- Data terminal devices
- Digital tachometers
- EFT POS
- Fiscal printers
- Hand held terminals
- Measuring instruments and analysers
- Medical equipment
- Portable printers and terminals
- Taxi meters

Options

CSM05



Chip set



Double Opto



GearPRO™



Temperature extension

