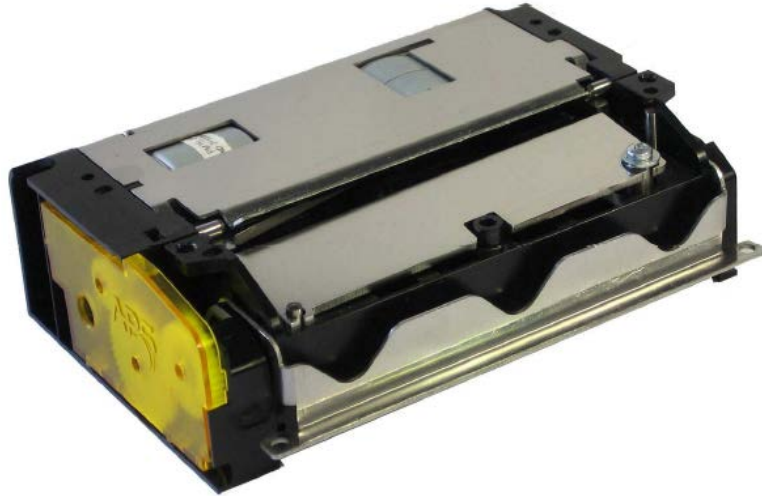


HSP 3000 Series

Ultra High Speed - Heavy Duty Thermal Printers



80 mm
to 82.5 mm



Options

- Controller Board
- Label / black mark detection sensor
- Double Opto
- 300 dpi

Applications

- ATM
- Data terminals
- Gaming and lottery
- Gas pumps
- Kiosks
- Parking meters
- Ticketing
- Vending machines
- ID automation

Features

- 80 or 82.5 mm paper width
- 200 km printing life
- Full easy loading printer & cutter
- 2 million cuts life (full & partial)
- Extended temperature range
- Near straight paper path for thick paper printing
- Non-sparking design for gas pumps
- Ability to add external presenter and sensor control
- Kiosk or Easy Loading* versions

Specifications

HSP3128-KS/EL

Printing method	Thermal
Number of dots	640
Resolution (dots/mm)	8
Printing width (mm)	80 mm
Paper width (mm)	80 to 82.5
Max. paper thickness (µm)	220
Paper loading	Easy Loading
Printing speed (mm/s)	190
Paper detection	Opto sensor
Temperature detection	Thermistor
Cover-open detection	Mechanical switch
Voltage range (Logic Head)	5 or 3.3V ± 5% 12 V typical, 16 V max.
Dot resistance (Ohm)	300 ± 3 %
Energy per dot (mJ)	0.16
Weight (g)	450
Printing life/reliability	200km/100M pulses
Cutter life	2M cuts
Operating temperature (°C)	-20 to +70 °C
Operating humidity (%)	10 to 90 (no condensation)
Dimensions (WxDxH mm)	125x82.5x35.7
Cutter speed (default mode)	220 µm in 550 ms
Cutter speed (high speed mode)	80 µm in 240 ms
Printer version *	Kiosk or easy loading
Opto sensor position	Left or right



*3128-KS Kiosk version



*3128-EL Easy Loading version

**under certain driving conditions & using recommended paper