

HSP 3000 Series

Ultra High Speed - Heavy Duty Thermal Printers



86 mm

Specifications

HSP3208-86-KS/EL

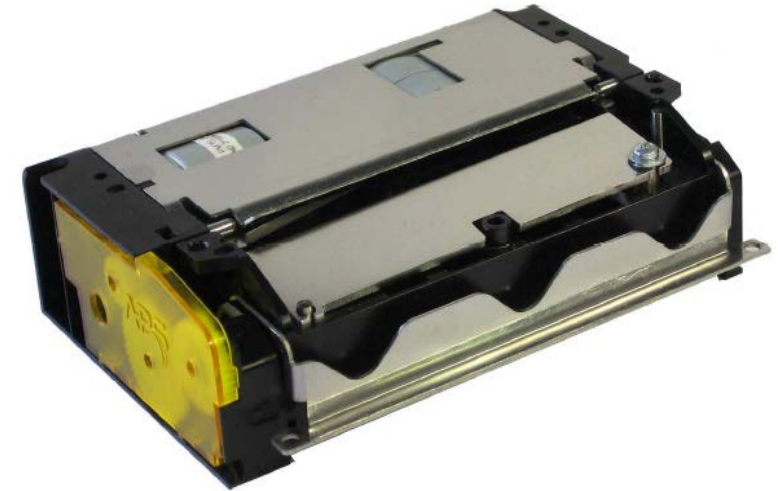
Printing method	Thermal
Number of dots	640
Resolution (dots/mm)	8
Printing width (mm)	80
Paper width (mm)	86
Max. paper thickness (µm)	220
Paper loading	Easy loading
Printing speed (mm/s)	300 (11.8 ips) **
Paper detection	Opto sensor
Temperature detection	Thermistor
Cover-open detection	Mechanical switch
Voltage range (Logic Head)	3.3 to 5V 24V to 26.5V
Dot resistance (Ohm)	650 ± 3 %
Energy per dot (mJ)	0.13
Weight (g)	450
Printing life/reliability	200 km/ 100 M pulses
Cutter life	2 M cuts
Operating temperature (°C)	-20 to +70 °C
Operating humidity (%)	10 to 90 (no condensation)
Dimensions (WxDxH mm)	125 x 82.5 x 35.7
Cutter speed (default mode)	220 µm in 550 ms
Cutter speed (high speed)	80 µm in 240 ms
Cutter detection	Mechanical switch
Black mark sensor position	Left or right
Printer version	Kiosk or Easy Loading*



*3208-86-KS Kiosk version



*3208-86-EL Easy Loading version



Features

- 86 mm paper width adapted for the railway ticketing industry
- Ultra high speed up to 300 mm/s
- Cuts up to 220 µm (10 mils)
- 200 km printing life
- 2 million cuts life (full & partial)
- High-speed printing with historic control
- Wide operating temperature range
- Near end-of-paper sensor interface
- Barcode support
- Kiosk and Easy loading versions*

**under certain driving conditions & using recommended paper

Applications

- Ticketing (paper width adapted to railway ticketing industry)
- ATM
- Data terminals
- Gaming and lottery
- Gas pumps
- Kiosks
- Parking meters
- Vending machines
- ID automation

Options

- Controller Board
- Label / black mark detection sensor
- 300 dpi
- Double Opto